

**Pro-face**

by **Schneider** Electric

Touch Operator Interface

# GP4000 SERIES

visibility





## Enhanced Visibility

All models employ 65,535-color TFT LCDs with enhanced backlight brightness control. Crisp screens improve monitoring quality and safer operation.



## Mobile Remote Monitoring

Remotely monitor large-sized or long-distance applications, large process systems, or multiple machines on a manufacturing site on an easy-to carry iPhone, iPad, iPod touch, Android smartphone or Android tablet.



## Multiple Standards support a variety of Applications

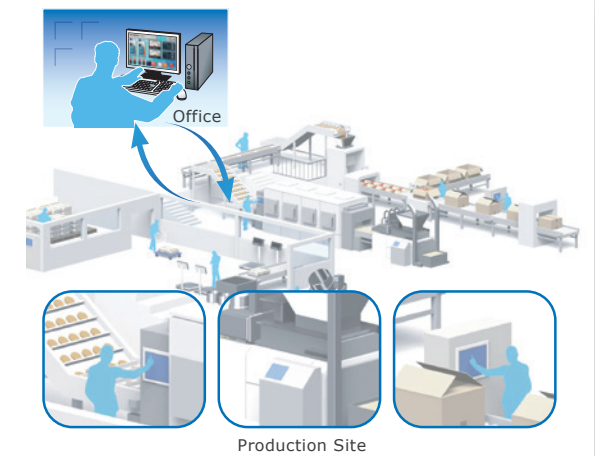
Coated components and compliance with a variety of international standards enable use in a diverse range of environments.



CCS Ship Classification is also supported.

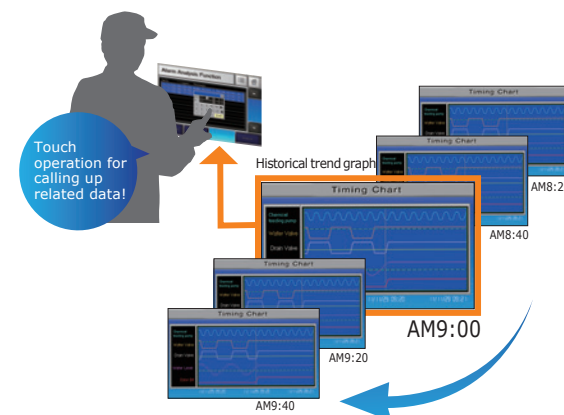
## Remote Data Collection and Management

A data management system, built with Pro-Server EX software for production quality and efficiency through HMI units installed on production machines can be simply and cost-efficiently built with standard PC software, such as Microsoft Office and SQL.



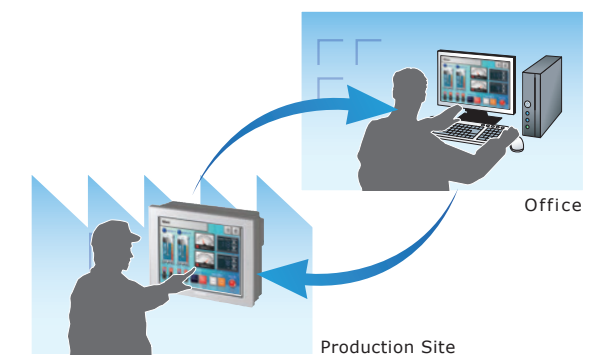
## Easy Troubleshooting

Alarm Analysis Function gives you timely understanding of error causes on site. With only a few clicks for configuration, you can set alarm analysis screens with logged status data of the alarm-related device.








## Remote Monitoring

The Remote Monitoring software, GP-Viewer EX, allows you to monitor HMI screens installed on the production site from a Windows PC in a remote location.

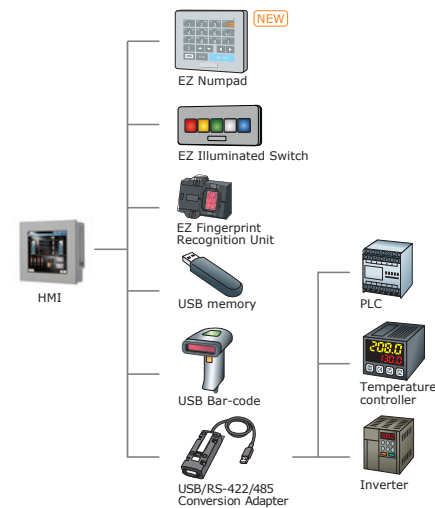








	12.1" <small>AC 100-240V DC 24V</small> GP-4601T / GP-4603T <small>(Isolated SIO model)</small>	10.4" <small>AC 100-240V DC 24V</small> GP-4501T / GP-4503T <small>(Isolated SIO model)</small>	7.5" <small>DC 24V</small> GP-4401T	5.7" <small>DC 24V</small> GP-4301T / GP-4303T <small>(Isolated SIO model)</small>	3.5" <small>DC 24V</small> GP-4201T / GP-4203T <small>(Isolated COM SIO model)</small>
Standard Model					
Display (Resolution)	65,536-color TFT (SVGA 800 x 600 pixels)		65,536-color TFT (VGA 640 x 480 pixels)		65,536-color TFT (QVGA 320 x 240 pixels)
Touch Panel Type	Analog or Matrix (Support Two-Point Touch)			Analog	
Memory	32MB (Application), SRAM320KB (Backup for HMI), SRAM64KB (Backup for Control)			16MB (Application), SRAM320KB (Backup for HMI), SRAM64KB (Backup for Control)	
Ethernet	x1 (IEEE802.3i / IEEE802.3u, 10BASE-T/100BASE-TX)			x1 (IEEE802.3i / IEEE802.3u, 10BASE-T/100BASE-TX)	
SIO	RS-232C×1, RS-422/485×1		RS-232C×1, RS-422/485×1		RS-232C/422/485×1
SD Card Slot (Max. 32GB)	x 1		x 1		No
USB	USB Type-A (2.0) x 1, USB mini-B (2.0) x 1		USB Type-A (2.0) x 1, USB mini-B (2.0) x 1		
Replaceable Battery	Yes		Yes		No (Rechargeable battery)
Alarm Analysis DB Function	Yes		Yes		
Other models	Coated model: Yes / Color variation: Yes / Rear-mount model: Yes (Except GP-4603T, GP-4503T)			Coated model: Yes / Color variation: Yes / Rear-mount model: Yes (Except GP-4303T, GP-4201T and GP-4203T)	

### Easily connect multiple USB devices

A controller with serial interface, EZ Series accessory unit, bar code reader, and USB flash drive can be easily connected to the HMI unit.\*



\* EZ Fingerprint Recognition Unit also requires power supply cable.  
\* Multiple devices of the same model cannot be connected.

	10.4" <small>DC 24V</small> GP-4501TW	7.0" wide <small>DC 24V</small> GP-4401WW	5.7" <small>DC 24V</small> GP-4301TW	3.5" <small>DC 24V</small> GP-4201TW
W Model				
Display (Resolution)	65,536-color TFT (VGA 640 x 480 pixels)	65,536-color TFT (WVGA 800 x 480 pixels)	65,536-color TFT (QVGA 320 x 240 pixels)	
Touch Panel Type	Analog		Analog	
Memory	16MB (Application), SRAM128KB (Backup for HMI)	16MB (Application), SRAM128KB (Backup for HMI)	8MB (Application), SRAM128KB (Backup for HMI)	
Ethernet	x1 (IEEE802.3i / IEEE802.3u, 10BASE-T/100BASE-TX)		x1 (IEEE802.3i / IEEE802.3u, 10BASE-T/100BASE-TX)	
SIO	RS-232C×1, RS-422/485×1		RS-232C×1, RS-422/485×1	
SD Card Slot (Max. 32GB)	x 1	x 1	No	
USB	USB Type-A (2.0) x 1, USB mini-B (2.0) x 1		USB Type-A (2.0) x 1, USB mini-B (2.0) x 1	
Replaceable Battery	Yes	Yes	No (Rechargeable battery)	
Alarm Analysis DB Function	No		No	
Other models	Coated model: Yes / Color variation: Yes		Coated model: Yes / Color variation: Yes	



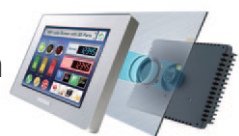
	5.7" DC 24V GP-4301TM Modular Type	3.5" DC 24V GP-4201TM Modular Type	4.3" DC 24V GP-411*T Compact Type	3.4" DC 24V GP-410* Compact Type
Display (Resolution)	65,536-color TFT (QVGA 320 x 240 pixels)		Color LCD (480 x 272 pixels)	Monochrome LCD (200 x 80 pixels)
Touch Panel Type	Analog			
Memory	8MB(Application),nvSRAM128KB(Non-volatile,No Battery Needed)		8MB(Application), FLASH EPROM 128KB *1*2	2.2MB(Application), EPROM128KB*1*2
Ethernet	×1 (IEEE802.3i / IEEE802.3u, 10BASE-T/100BASE-TX)		×1 (IEEE802.3u, 10BASE-T/100BASE-TX) *3	
SIO	RS-232C/422/485×1		RS-232C/422/485×1*4	
SD Card Slot	No			
USB	USB Type-A (2.0) ×1, USB mini-B (2.0) ×1			
Replaceable Battery	No			
Alarm Analysis DB Function	No			
Other models	No			

\*1 Backup for HMI \*2 For supported features, please refer to GP-Pro EX Reference Manual. \*3 GP-4114T/4104 only \*4 Excluding GP-4114T/4104

### Modular Type HMI with Easy Installation

GP4000M Series

A separate installation cable is under development.



### Compact HMI with Full-graphic Display

GP4100 Series



## The Perfect Visualization Solution for every need.

### Rear-mounting HMI, Integrates into Machine Design

GP4000 Series Rear-mount Model



Size	12.1"	10.4"	7.5"	5.7"
------	-------	-------	------	------

GP4000 Series Rear-mount Models are DC power and analog touch panel models only.

### Corrosion-resistant Board Coating for Environmental Requirement

All GP4000 Series products are available in coated models. (Except GP4100 Series and GP4000M Series)

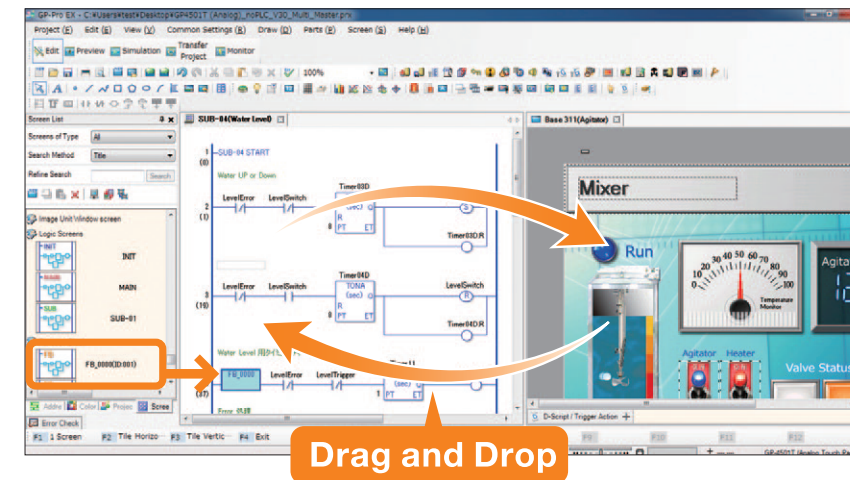
### Compatibility with Equipment Design or Customer Corporate Brand

GP4000 Series Color Variation



Easy sharing of symbolized device data between HMI screen and control programs using drag and drop operation provides you with intuitive operation throughout the successful completion of a project.

Function Block control programming also eases your control system design with frequently used and specially defined control functions.



Drag and Drop

## GP-Pro EX Ver. 3.1 New Features

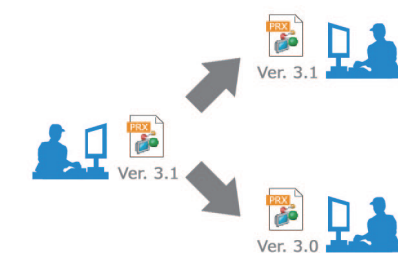
### Quickly understand detailed differences between similar project files

Project Comparison Tool allows easy yet detailed comparison of two screen-project files for updating and modifying customer applications. Differences for each part attribute, alarm message, or setup item are displayed.

Screen B1		A	B
Parts 1	Address	X0001	X0002
	Shape	Circle	Square
	Action	Momentary	Alternate
	Label	Run	Run

### Multi-version File Format Support for Screen Project Files

Screen project files edited in version 3.1 of GP-Pro EX can also be saved in version 3.0 format to facilitate screen data handling among personnel with different responsibilities such as testing engineers, factory installation technicians, and maintenance engineers.



### More New Features

- Change password during on-line operation
- Extended text search and replacement
- Range Setting on Word Switch
- Selectable SRAM Back-up Data Modes for Screen Data Transfer



# Pro-face

by Schneider Electric

All *eyes* on the customer make us "the best interface"

### *i*ntimacy

Connect intimately with our customers and stakeholders

### *i*nnovation

Provide benefits to our customers through innovation

### *i*nteraction

Enhance customer experience through positive interaction

## ⚠ WARNING

### HAZARD OF OPERATOR INJURY, OR UNINTENDED EQUIPMENT DAMAGE

Before operating any of these products, be sure to read all related manuals thoroughly.

**Failure to follow these instructions can result in death, serious injury or unintended equipment damage.**

- For printing purposes, the colors in this catalog may differ from those of the actual unit.
- Actual user screens may differ from the screens shown here.
- Electric equipment should be installed, operated, serviced, and maintained only by qualified personnel.
- All product names used in this catalog are the registered trademarks or trademarks of their respective companies.
- All information contained in this catalog is subject to change without notice.
- No responsibility is assumed by Digital for any consequences arising out of the use of this material.

<b>Global Headquarters</b> Digital Electronics Corporation Osaka, JAPAN Tel: +81 (0)6 6208-3133 Fax: +81 (0)6 6208-3136 www.pro-face.com info@pro-face.com	<b>Indonesia</b> Pro-face Indonesia Ventura Building - 7th Floor, Jl. RA Kartini Kav.26, Cilandak, Jakarta Selatan 12430 Indonesia Tel / Fax: +62 21 750 4496 www.proface.co.id info@proface.co.id	<b>South Korea</b> Pro-face Korea Co., Ltd. Seoul, SOUTH KOREA Tel: +82 (0)2 2630 9850 Fax: +82 (0)2 2630 9860 www.proface.co.kr proface@proface.co.kr	<b>European Headquarters</b> Pro-face Europe B.V. Hoofddorp, THE NETHERLANDS Tel: +31 (0)23 55 44 099 Fax: +31 (0)23 55 44 090 www.proface.eu info@proface.eu	<b>Italy</b> Pro-face Italia S.p.a. Bovisio Masciago (Milano), ITALY Tel: +39 (0)362 59 96 1 Fax: +39 (0)362 59 96 69 www.proface.it info@proface.it	<b>Spain and Portugal</b> Pro-face España Cardedeu (Barcelona), SPAIN Tel: +34 (0)93 846 07 45 Fax: +34 (0)93 845 48 68 www.proface.es info@proface.es
<b>Australia and New Zealand</b> Pro-face Australia Mt. Waverley, AUSTRALIA Tel: +61 (0)3 9550 7396 Fax: +61 (0)3 9550 7390 www.pro-face.com.au www.pro-face.co.nz pfau@pro-face.com	<b>North America</b> Pro-face America, Inc. Ann Arbor, MI U.S.A Tel: +1 734 477 0600 Fax: +1 734 864 7347 www.profaceamerica.com info@profaceamerica.com	<b>Taiwan</b> Pro-face Taiwan Taipei, TAIWAN Tel: +886 (0)2 2657 1121 Fax: +886 (0)2 2657 1021 www.proface.com.tw proface@proface.com.tw	<b>Austria</b> Pro-face Europe B.V.(Austria Office) Hagenberg, AUSTRIA Tel: +43 7236 3343 620 Fax: +43 7236 3343 629 www.proface.at info@proface.at	<b>Denmark</b> Pro-face Northern Europe ApS Roskilde, DENMARK Tel: +45 70 22 01 22 Fax: +45 70 22 01 33 www.proface.dk info@proface.dk	<b>Sweden</b> Pro-face Sweden AB Löddeköpinge (Malmö), SWEDEN Tel: +46 46 540 90 70 Fax: +46 46 71 27 90 www.proface.se info@proface.se
<b>China</b> Pro-face China International Trading Co., Ltd. Shanghai, P. R. CHINA Tel: +86 (0)21 6361 5175 Fax: +86 (0)21 6361 5176 www.proface.com.cn proface@proface.com.cn	<b>Singapore</b> Pro-face Singapore TechPoint, Singapore Tel: +65-6832-5533 Fax: +65-6415-1605 www.proface.sg info@proface.sg		<b>France</b> Pro-face France S.A.S. Mitry-Mory, FRANCE Tel: +33 (0)1 60 21 22 91 Fax: +33 (0)1 60 21 22 92 www.proface.fr info@proface.fr	<b>Poland</b> Pro-face Europe B.V.(Warsaw Office) Warszawa, POLAND Tel: +48 (22) 465 66 62 Fax: +48 (22) 465 66 67 www.proface.pl info@proface.pl	<b>Switzerland</b> Pro-face Schweiz GmbH Regensdorf, SWITZERLAND Tel: +41 (0)43 343 7272 Fax: +41 (0)43 343 7279 www.proface.ch info@proface.ch
<b>India</b> Pro-face India Bangalore, INDIA Tel: +91 80 4333 3540/3541 Fax: +91 80 4333 3222 www.proface.co.in sales.proface@proface.co.in	<b>South-East Asia Pacific</b> Pro-face South-East Asia Pacific Co.,Ltd. Bangkok, THAILAND Tel: +66 (0)2 617 5678 Fax: +66 (0)2 617 5688 www.proface.co.th pfsales@proface.co.th		<b>Germany</b> Pro-face Deutschland GmbH Solingen, GERMANY Tel: +49 (0)212 258 260 Fax: +49 (0)212 258 2640 www.proface.de info@pro-face.de	<b>Russia</b> Pro-face Europe B.V. (Russia Office) Saint-Petersburg, RUSSIA Tel: +7 (812) 336 47 06 Fax: +7 (812) 336 47 18 www.pro-face.ru info@pro-face.ru	<b>United Kingdom</b> Pro-face UK Ltd Coventry, ENGLAND Tel: +44 (0)2476 511288 Fax: +44 (0)2476 511499 www.proface.co.uk info@proface.co.uk